

Our Place | Ahu Taumatua

THE REDEVELOPMENT OF PALMERSTON NORTH REGIONAL HOSPITAL

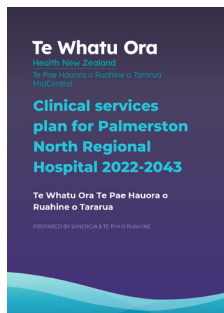
ISSUE 37 | JUNE 2023

Our Place | Ahu Taumatua brings you all the latest information on the redevelopment projects at Palmerston North Regional Hospital to improve capacity and healthcare available in our region.

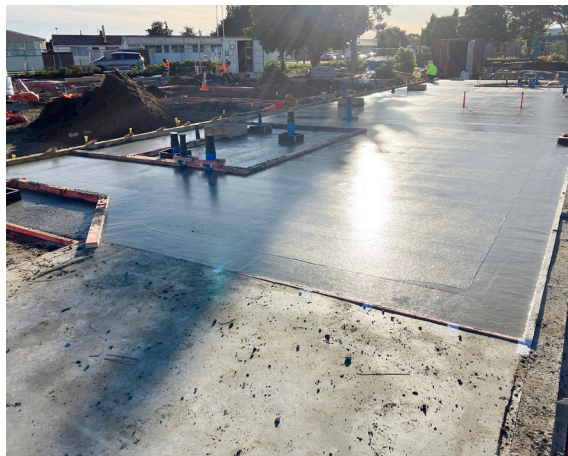
INTRODUCTION

We're now halfway through the year and with that come several achievements and milestones reached with Palmerston North Regional Hospital's redevelopment. We continue to give incredible thanks to the planning, construction and projects teams and most importantly our MidCentral people. We acknowledge and recognise your ongoing commitment and resilience as we journey together through this changing time.

The Acute Services Block and Re-living of the Clinical Services Block has been gifted a new project name by Pae Ora, our Māori Health department. A name-blessing ceremony is being planned, so keep an eye out for this.



Your say on the draft Clinical Services Plan for Palmerston North Hospital is needed. [Send your thoughts in now.](#)



The foundation of our Acute Mental Health Unit (AMHU) is being laid, with the first section completed.

The second stage of our SPIRE project is progressing well, with the theatres and cath lab taking shape.



You can follow the progress of these projects on our website www.projects.mdhb.health.nz or by scanning the QR code.



Whakakatauki

Kua huri te rau o te kōtukutuku, kua waenga ki ngā hē.

"When the leaves of the fuchsia have turned, it is half-way to the troublesome times." When the fuchsia leaves change colour it is clear that the season has advanced midway between the cold of winter and the scarcity of food in the spring.

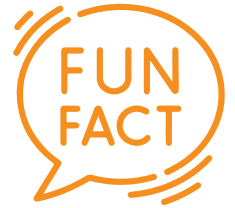
Source: Ngā Pepeha a ngā Tipuna.

ACUTE MENTAL HEALTH UNIT (AMHU)

- June has seen significant progress made in establishing the building's foundations.
- Stage 1 has been completed, including installation of the timber base plates. Weather permitting, the stage 2 slab pour will happen on Monday 10th July, with Stage 3 detailed excavations to be further progressed, prior to commencing foundation works.
- To manage traffic speed around the site, speed bumps have been installed near Gate 5.



Check out the new project signage boards on the site fencing.



2260m³ of aggregate has come into the building platform to date!



AMHU concrete floor Stage 1 poured.



AMHU foundation works in progress.

NEW ACUTE SERVICES BLOCK AND RE-LIFING OF THE CURRENT CLINICAL SERVICES BLOCK

- Our newly gifted project name is coming! Watch this space.
- What are your thoughts on the draft Clinical Services Plan issued on 12th June? The plan is very much in draft form and we need everyone's input to finalise it.

The plan is important as it sets out the future direction of the hospital and will inform the facilities redevelopment.

[View the Draft Clinical Services plan here](#)

[Have your say on the plan here](#)

- The ASB & Re-lifing of the CSB project falls within Te Whatu Ora's Investment & Infrastructure Group, and the Chief Infrastructure & Investment Officer, Jeremy Holman visited with members of his team on 19 June. Jeremy, Paul Hrstich, Emma-Kate Hill and Monique Fowler toured the hospital to learn about the issues faced by our clinician teams in delivering care within the current hospital buildings. They met with clinical and operational leads and heard of our redevelopment plans.



Jeremy Holman (centre of pic) speaks to Neil Wanden and Monique Fowler from the hospital roof top.

SPIRE

- The creation of the theatres (two new and one reconfigured), as well as our new cardiac cath lab and the fourth procedure room is progressing.
- As the photos show, a lot of work involves establishing and connecting the many services required for these areas to be fully functional. This includes medical gases, suction, power, heating and ventilation systems, and water, to name a few.
- A wide range of medical equipment including the ceiling mounted C-arm for the cath lab, theatre lights and pendants are also in the works.
- Gib is now going up in two of the three theatres, and also in the cath lab.
- On the roof top, air handling and other plan is being installed.



SPIRE electrical and other key services progressing.



SPIRE ceiling ducting for heating, medical gases, energy and water.



Installing plant on the rooftop.

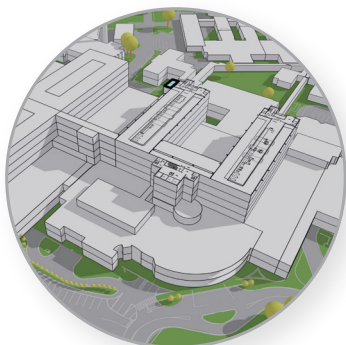
Te Whatu Ora

Health New Zealand

Te Pae Hauora o Ruahine o Taranaki
MidCentral

“Our Place” keeps you informed of the strategic projects, interim solutions and the supporting infrastructure work being progressed to ensure Palmerston North Regional Hospital is able to meet current and future demand.

THE REDEVELOPMENT OF PALMERSTON NORTH REGIONAL HOSPITAL



1 SHORT-TERM, TACTICAL STOP-GAP SOLUTIONS

- SPIRE
- MAPU-EDOA unit
- ICU and acute care capacity
- Paediatric area in ED

2 LONG-TERM, STRATEGIC SOLUTIONS

- Acute services block
- Reconfiguration of the clinical services block
- Acute mental health unit
- Regional cancer centre

3 INFRA-STRUCTURE WORKS

- Electrical, heating, ventilation
- Three waters
- Medical gases
- Fire systems
- Thermal and emergency generation systems